

:C.-S.-S.-C.-P-.S.-G.

**FOR THE CORRECT- SENTENCE- STRUCTURE-
COMMUNICATION-PARSE- SYNTAX- GRAMMER.**

**MODULE 1
FOR THE CLAIM OF THE LIFE**

**"I HAVE A DREAM THAT ALL PEOPLE WILL UNDERSTAND PROPER LANGUAGE SYNTAX
AND WILL SPEAK CORRECTNESS TO POWER SO THAT POWER UNDERSTANDS WHAT IS
ACTUALLY MATHEMATICALLY CORRECT INSTEAD OF CONTINUING TO PERPETUATE FRAUD!"**

:DAVID-WYNN: MILLER.

"NO ONE EVER WENT TO WAR OVER A MATH PROBLEM" :DAVID-WYNN:MILLER.

Why use :C.-S.-S.-C.-P-.S.-G.

We are using :C.-S.-S.-C.-P-.S.-G. to correct the fraud of this world .

To know how to do that we need to learn how the technology functions and use it to stop and correct. This means to show in-correct grammer to those that use it and correct by showing we know how a sentence IS correctly structured, that it reads backwards and forwards the same and is in Now time.

The world of adverb verb fiction has been used against us for 8500 years all 250 countries have been under the adverb verb guise used by the Universal Postal Union Bern Switzerland established 1873 aka The New World Order. According to :David-Wynne:Miller.

The Universal Postal Union is a United Nations specialized agency and the postal sector's primary forum for international cooperation. <https://www.upu.int/en/Universal-Postal-Union>

The technology he has given us is for our use to bring us out of a fiction world into a world where we all know the correct syntax to be able to communicate without lies.

This is not about going up against the system or creating conflict it is simply about being correct, being able to prove that we are correct and not enable or allow the lies perpetrated against us to continue.

C.-S.-S.-C.-P-.S.-G is mathematical no matter which way round you write a math problem you will be able to balance it out if it is written correct.

$$2 \times 3 = 6 \div 3 = 2$$

It really is that simple.

When you know how sentences are structured and the mathematics that makes grammar function, it all adds up.

LIVE-LIFE CLAIM

WHAT IS THE PURPOSE OF A LIVE-LIFE CLAIM.

A Live-life claim is designed to give you the knowledge to be able to claim your life back in correct standing. It allows you to claim the vessel/body, being witnessed as a living man or woman. It takes you out of the fiction/ dead and back into the land of the living making your existence a fact. If you so choose to use it.

Your “Claim of Live-Life” means nothing to the “Policy-Officers” or “Law Enforcement” Agencies. Use your “Claim of Live-Life” as Evidence in the Court when you file a law suit or when you are re-butting false and misleading statements.

Tell any Judge if they ever let you into a court that you are studying Correct-Sentence-Structure-Communication-Parse-Syntax-Grammar-Performance (C.-S.-S.-C.-P.-S.-G.-P.) to prove language is as accurate as a math problem and that you have knowledge of Syntax.

That you are a LIVE man or woman, that you can be damaged by Fictitious Conveyance of Language, and that you know how to Stop and Correct.

With knowledge of mathematical interface of language you can write Correct-Sentence-Structure-Communication-Parse-Syntax-Grammar-Performance (C.-S.-S.-C.-P.-S.-G.-P.) documents to prove language as accurate as a math problem and with syntax you can show people what is Wrong and Right.

This technology has power at the highest levels of Government all around the world.

Once you learn it, you have the power to stop and correct any-one try-ing to manipulate you.

When you can correct Syntax, you own your freedom.

HOW DO YOU KNOW YOU ARE ASSUMED DEAD?

There are three main ways you have been presumed dead a lost soul or lost at sea.

- 1) C'ESTQUE VIE ACT 1666.
- 2) NOMS DE GUERRE 1914 FIRST WORLD WAR.
- 3) BIRTH CERTIFICATE.

C'EST QUE VIE ACT 1666.

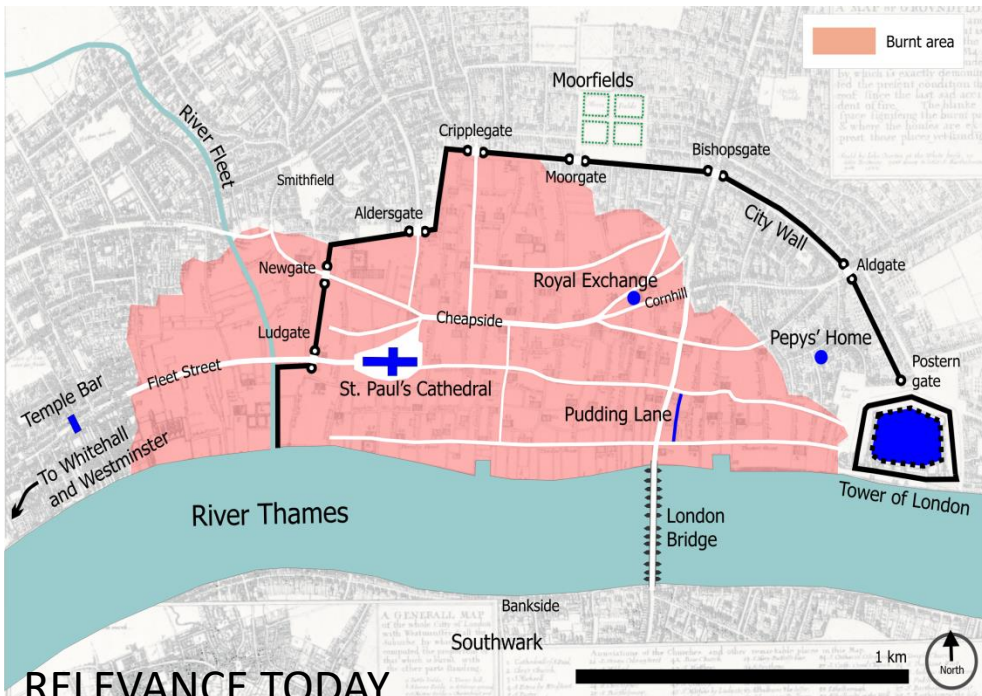
<https://www.legislation.gov.uk/aep/Cha2/18-19/11>

The C'est Que Vie Act came into force shortly after the fire of London in 1666.

As no-one knew who was alive or dead in the chaos, everyone was assumed dead and all money bonds, titles and deeds were held in trust by the bankers until a claimant came forth and could be witnessed by three living people that verified them as the living man or woman they claimed to be.

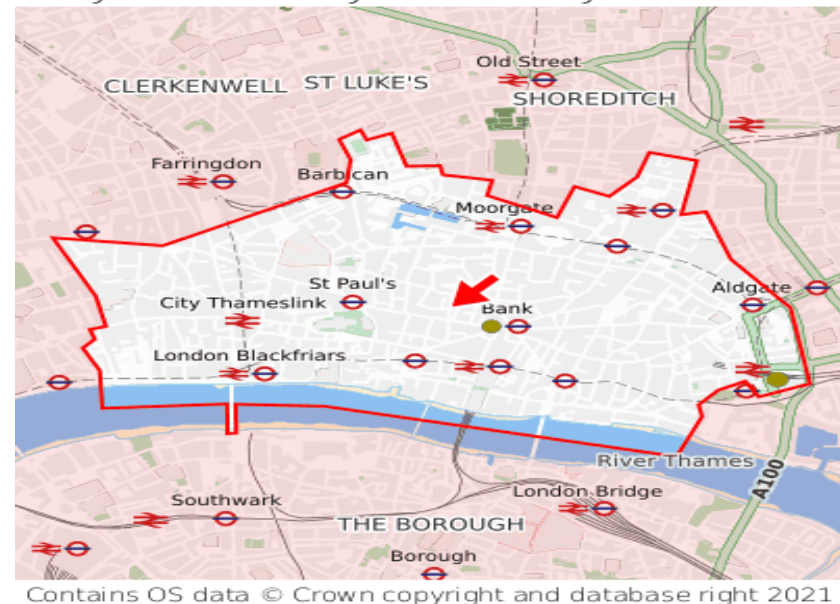
All who could not claim to be living because there were no witness were classed as lost souls and lost their wealth property and title to the banks.

The fire of London was essentially a land grab deliberately set to establish the city of London and further fund the Banks.



RELEVANCE TODAY.

Map showing the position of City and County of the City of London



Contains OS data © Crown copyright and database right 2021

<https://img1.wsimg.com/blobby/go/e636e1bb-3447-4608-ab5d-98fa9465ac83/Capital-PDF.pdf>

The City of London is also called by:

"The City of London Corporation", "The City", "The City-State", "The Square Mile", The "#Crown", "The Crown Corporation", "The Epicentre Of International Financial Capitalism".

The City-State is not part of London, England, United Kingdom, Europe, the Commonwealth, the UPU, nor the UN. It is the Sovereign world's centre of debt-based banking 'system' & the wealthiest square mile on the face of the Earth. It houses the Rothschild controlled Bank of England, Lloyds of London, the London stock exchange, all British banks, the branch offices of 385 foreign banks & 70 US banks. It has its own courts, its own laws, its own flag & its own police force. It is an "offshore" institution that pays no taxes. It is also the headquarters for worldwide English Freemasonry & headquarters for the worldwide money cartel known as The #Crown.

The Crown is not the British Royal Family or the British Monarch. The Crown is the private corporate City State of London. The City of London is divided into 25 wards. Each ward elects one Alderman and two or more Common Councilmen which is one of The City Council: <https://bit.ly/TheCityCC> under a mayor called the Right Honourable Lord Mayor of the City of London Corporation (appointed 9Nov-8Nov for one year). They serve as proxies or representatives who sit-in for 13 of the worlds wealthiest, most powerful banking families(), including the Rothschild family, the Warburg family, the Oppenheimer family & the Schiff family... These families and their descendants run the Crown Corporation of London.

EMBASSY OF THE VESSEL-PHOUTHONE- THONE: SIHARATH IN THE QUEEN, CARE OF THE CITY OF LONDON.

Filter appointments

Current appointments

Total number of appointments 1

[GLOBAL RISKS REDUCTION FUNDING LTD. \(13431000\)](#)

Company status

Active

Correspondence address

Care Of City Of London, International House, 24
London, Not., United Kingdom

Role **ACTIVE**

Director

Appointed on

1 July 2022

GLOBAL RISKS REDUCTION FUNDING LTD. (13431000)

Company status

Active

Correspondence address

Care Of City Of London, International House, 24 Holborn Viaduct, City Of London, Notl, United Kingdom

Role **ACTIVE**

Director

Appointed on

1 July 2022

Other Corporate Body or Firm [What's this?](#)

Law governed

VIENNA CONVENTION ON
DIPLOMATIC RELATIONS.

Legal form

EMBASSY

Register location

: VESSEL-PHOUTHONE-THONE:
SIHARATH.

Registration number

NY536974339GB

GLOBAL RISKS REDUCTION FUNDING LTD.

Company number 13431000

[Follow this company](#)

[File for this company](#)

[Overview](#)

[Filing history](#)

[People](#)

[More](#)

Registered office address

Care Of International House, 24 Holborn Viaduct, City Of London

Company status

Active

Company type

Private limited Company

Incorporated on

1 June 2021

Accounts

First accounts made up to **30 June 2022**
due by **1 March 2023**

Confirmation statement

Next statement date **9 May 2023**
due by **23 May 2023**

Last statement dated **9 May 2022**

Nature of business (SIC)

53100 - Postal activities under universal service obligation
64999 - Financial intermediation not elsewhere classified
82990 - Other business support service activities not elsewhere classified
84210 - Foreign affairs

Previous company names

Name

Period

1914 THE FIRST WORLD WAR

As so many soldiers were going to war and were expected not to return their safety was not guaranteed by any country under any treaty. They were assumed dead before departure and their names writ in all UPPER CASE or Noms De Guerre

Noms De Guerre= War name

Man inherently knows there are no rights of dominion over other men, but he has invented ways to seek such gain by creating the persona which, when applied to Commercial Law and Martial Law, becomes a nom de guerre. This is literally a “war name” to separate the name from the fictional persona.

How a ‘name’ is spelled brings to distinction the ultimate conflict of the ‘real’ Man, and the fictitious imitation of the Man that is a persona ‘strawman’.

Names are deliberately spelled on all Birth Certificates, Court Documents, licenses, and Passports etc with all capital letters. The modern Law uses the nom de guerre in all instances of spelling a “legal” name. Legal is “ the undoing of Gods law” [1893 Dictionary of Arts and Sciences, Encyclopaedia Britannica, a dictionary of arts, sciences and general literature /The R.S Peale 9th 1893]

Being bound under Treaty of International Law and the lex mercatoria (commercial law), today’s purported Courts and all government agencies are prohibited from dealing with ‘real people’ and are required to deal only with fictional characters (artificial persons) by styling all parties with a nom de guerre.

A corporation is also a fictional persona. Any party who agrees to appear before the “system” must do so by a persona or nom de guerre spelled in all capital letters.

We can see the dead are also writ in all UPPER CASE by witnessing tomb stones in a grave yard. We can prove therefore that ALL UPPER CASE names are Noms De Guerre's and are also used to name the Dead. We also get the idea from the language of the courts Summons, All rise, when a judge enters the court, signing your name, a sign is also something the dead give to show that they are there in a séance . All references to the dealing with dead fictitious characters not living men and women.



BIRTH CERTIFICATE

There is so much attached to birth/ berthing with it's rituals and spells we will begin with a look at Word Magick to give a firmer foundation for a lot of the hidden meanings and associations with words such as Birth/Doctors / Wards etc before coming back to this recent finding by Ian Stuart.

WHAT IS REGISTERED AT BIRTH

Separation from the umbilical chord creates TWO ENTITIES . A. Live Born and B. Placenta/afterbirth . " afterbirth/berth "= (admiralty law terms) Berth IS TO ABANDON and the PLACENTA is a "dead entity " that is the only entity actually claimed by the Occult Vatican and registered with governments" and cannot have any rights or own property because it is DEAD !. The Birth Registration Certificate of death of the part of the PLACENTA is the only part subject to LEGISLATION (see Births ,Deaths Marriages and relationships Act 1995 defines STILL BIRTH (placenta) includes a "still birth"and EXCLUDES all else including LIVING Babies and Living Beings the placenta is INCAPABLE of being living or dead . By agreeing to "sign" a birth certificate is a certificate of a dead placenta and mum and dad have agreed to sign that certificate agree part of the birth is DEAD and has no rights and this is how the vatican and governments have operated for centuries ON ONE BIG LIE.

IAN STUART.

SEPERATION FROM THE
UMBILICAL CHORD CREATES
TWO ENTITIES

A. LIVE BORN

B. PLACENTA / AFTER BIRTH

"AFTER BIRTH / BERTH" =
BERTH IS TO "ABANDON AND
IS A "DEAD ENTITY" THAT
IS THE ONLY ENTITY CLAIMED
BY THE VATICAN THAT HAS
NO RIGHTS. AS IT IS DEAD.

THE BIRTH REGISTRATION THEN
BECOMES SUBJECT TO
LEGISLATION AND IT IS
CALLED A "STILL BORN" BY
BEING A DEAD PLACENTA.
WITHOUT LEGAL RIGHTS
GOVERNMENT'S AND VATICAN
CLAIM JURISDICTION OVER
THE "DEAD SOUL" CLAIMED AND
RECORDED AT THE HOSPITAL.



From My knowing.

It is not the placenta itself per say but the the Blood /DNA held within it that is claimed as being 'abandoned' and left as dead separate from the living God given natural body.

hence the Eucharist with the body and blood of Christ and ritual of repentance.

The symbolic re-union of the wafer (body) and blood (wine) of the Holy/ whole-ly Christ given by a priest coming between man and God as saviour of the soul/ essence/ God given life.

The Sin in need of repentance being cutting the umbilical cord in effect committing murder as part of the babies blood is allowed to die 'abandoned'. For which parents are informants of the crime and we are all sinners.

Names are not real, living, breathing people but instead are symbols of things (non-beings) in legal terms, names are artificial persons which are corporations. In other words your legal name represents the corporation that is used by the government to name you.

Corporation :- an organization, esp. a business, that has a legally separate existence from the people who run it. Can you see the link to the placenta/ after birth?

History

Enumerations of people were carried out long before the birth of Jesus. Data related to births were recorded in church registers in England as early as the 1500s. However, not until the 1902 Act of Congress was the Bureau of Census established as a permanent agency to develop birth registration areas and a standard registration system. Although all states had birth records by 1919, the use of the standardized version was not uniformly adopted until the 1930's.

Being Correct

How to create your live life claim

For us to be correct we must claim our name as a living man or woman.

witnessed as being alive by 3 witness.

The way we do this is with the C.-S.-S.-C.-P-.S.-G. LLC document.

The way we write the name is :John:Doe. = For the John of the /For the Doe family.

This is your :Copyright :Copy-Claim name and your Authority. As you are the Author.

To be correct we do not sign or write in cursive (joined up).

Each letter is fully formed by and of itself. Capital letter lower case and ending with a.

Sign = a symbol of a thing (non being)

Cursive = curs-ive = late Old English curs "a prayer that evil or harm befall one; consignment of a person to an evil fate," of uncertain origin. No similar word exists in Germanic, Romance, or Celtic. In the Christian sense "set of daily liturgical prayers" extended to "set of imprecations" as in the sentence of the great curse, "the formula read in churches four times a year, setting forth the various offenses which entailed automatic excommunication of the offender; also, the excommunication so imposed." Connection with cross is unlikely. Another suggested source is Old French curuz "anger."

Meaning "the evil which has been invoked upon one, that which causes severe trouble" is from early 14c. Etymology online dictionary.

ive = changes a verb into an adjective.

All additions must be under the flag that you are flying under. Placed on the document beneath the border/ top edge of the flag. So it all comes under the flag of the vessel/ your document. Place the special delivery sticker next to the stamp and thumb print so that it covers the edges of the stamp .

Do the same with the special delivery sticker .

You can place the S.D sticker under or next to the stamp and fingerprint to catch them both.

Writing over the stamp then includes the LLC number. All under the same Authority. Yours

Each sentence is a court of its own.

Four sentences articulate in now-time prepositional phrase order of operations showing that you know how to read and write in syntax CCSSPSGP

As well as using the LLC to claim your life you are claiming knowledge of what each sentence means and the terms you have set within the document. You know that each sentence is a court because it is a sentence with terms (words with an assigned meaning)

You dictate the terms of your contracts every word used in a sentence and the meaning so that there is no confusion, assumption, presumption, opinion of any words in your court of records and you can prove you are correct in the use of words.

Contract with the post office. A contract is an agreement made by two or more parties and must be authorised by both/ all parties to be lawful.

Your special delivery sticker serves as your contract through the post office that you have authorised by it's return to you for your authorisation of receipt.

A contract must have more than one authorisation on it two or more 'signatories' that agree to be bound by the terms laid out within it.

In this case it is your witness' that add their authority to your contract agreeing to the terms/ words laid out in it and they have the knowledge of it's use.

Why 3 witnesses.

Any one individual can make a claim about anything they choose, it is just an opinion.

Two people get together and make a claim , that is certification.

Three people get together and make a claim and it's called Authorisation.

Four people get together and make a claim and that is called a Class Action.

So to Authorise your documents as a Class Action there is You the claimant and 3 other witness' to validate your claim.

Class Actions cannot be voided by any body. Class Actions have to go to trial.

:David's original LLC has only 2 witness' making it Authorised.

The one you have if you've downloaded it from my website has 3 witness' making it a Class Action.

Always write in blue ink.

Black tends to be used for or represents the darker forces/ Legal system cult.

Red / yellow / orange can be seen as blood or bodily fluids and Must not be used.

Do not send actual blood or saliva through the post you will be arrested for sending a bio-hazard.

Anything in Red is removed from the page as with *Italics*

The Technology was given free. With no fee but with the inner standing of the knowledge to be able to use it. Anyone who is charging for the document is committing Fraud especially if they are authorizing documents over the internet without ever seeing the live man or woman in the flesh.

A Live-Life-Claim is a simple document stating the fact that you know you are you. That you are alive. And you can prove it.

This next step had left me a little unsure with what is correct , but having gone over :David's video's I can now say do it this way from what he says....

When you have finished creating your LLC Before you add the stamp run off 20 copies so you have back up . Do not copy the stamp as that is mail fraud.

I know there have been others recently Just writing copy on the top of a full copy with stamp included but in my opinion stick to the original creators knowledge and there is less chance of making a mis-take. It only takes 1 to void your contracts.

In 1407 BC pharaoh said so it is written , so it shall be done.

oral arguments cannot be seen or proven.

In order to prove anything it must be writ down and documented as proof.

Proof must be seen as it is written.

Therefore You must open the envelope when you receive it through the mail and look at the document if you have not seen a contract there is no proof of it's existence, that you have received it or agreed to the terms. No one else has to see it until you want to use it to stop and correct.

Never allow anyone to have your original document. Do not send it to anyone as proof only ever send a copy . Your LLC It Is the proof of your Life .

Some other things to mention:- using a LLC is a choice. How you deal with any situation is down to you don't let the fear get in the way if you choose to use it in it's full capacity. Equally don't feel you have to use it if you are unsure of how to deal with the situation. Standing up takes knowledge . Know you are correct before making a move. Do not work alone.

Having many eyes going over documents enables other to stop and correct you before you make a mis-take that cannot be undone